

# Birkbees

## Nurseries



*Working together,  
delivering a brighter future\**





# About Us

The Birkbees Group consists of four day care centres in and around Huddersfield. Each nursery has an individual character but all maintain the highest standards demanded by the owners Maz and Tracey who are actively involved in the day-to-day running of the nurseries. Our aim is to work together to provide high quality childcare that is available to all members of the community. Flexible and affordable, from birth to school age and beyond. This continuity of care ensures happy children and relaxed parents. All our nurseries are individual and offer different environments, we recommend you visit us to see which suits you and your family.

We understand the difficulties parents have in choosing the right care for their child. It is one of the most important decisions a parent will make. Therefore, we endeavour to meet parent's individual needs regarding child care and appreciate that flexibility is required at times. We do our utmost to accommodate and offer various flexible add on sessions.

We are lucky to have many Bilingual staff across the settings so if you have a specific need just let us know. We provide information in printed form and by email, don't forget to agree to these on the enrolment form!

Each nursery has an information station where you will find all the latest news.

Our Facebook pages and Instagram provides daily updates on the activities taking place, reminders of events and other useful childcare information.....take a look now at our social media pages or visit our website for more information

[www.birkbees.co.uk](http://www.birkbees.co.uk)

Warmest regards.

*Tracey & Maz*





# Parents Care & Safety

Here at Birkbees we work closely with parents to provide individual care routines to support your child's wellbeing. Each child's key worker will build a warm and caring relationship with your child so they feel secure and cherished whilst away from home. All of our nurseries provide a secure and safe environment for your child to play and develop. With secure entry systems and CCTV in every nursery, you can feel confident your child is safe. Please help us to keep all children safe by following some simple rules when coming into the nursery:

- ◆ Never let other parents in, even if you know them. Each person coming to drop off or collect needs to be buzzed in by a staff member.
- ◆ We don't allow parents to use their phones whilst in the nursery. This is a safeguarding issue as we don't want images taken of the children. Please make sure you finish your call before coming in.
- ◆ All our sites are designated No Smoking Areas this includes the Car Parks and grounds.
- ◆ Please hold your child's hand when walking through the car park area. Help us to keep all children safe by driving and parking responsibly.
- ◆ If you ever see anything that concerns you in relation to a child whilst in the setting please make the manager aware immediately. Only by working together can we keep all children safe.

*Thank you*



# Funding & Fees

## 2 Year Old Funding

We have places in all the nurseries to be able to offer 15 hours of free childcare to eligible families.

Sessions vary in each setting.

### Term time only

To find out if you are eligible you will need to complete an online application form that you can find online at our website

Once you have received your code you can arrange a visit to complete your child's enrolment.

## 3 & 4 Year Old Funding

### Help with Meeting the Costs

There are various schemes available to help you meet the costs of childcare. Designed to give working families up to 30 hours funded childcare a week. The Day-care Trust has all the information you will need.

For our current fee structure please refer to our website [www.birkbees.co.uk-fees](http://www.birkbees.co.uk-fees) or call the setting of your choice.

Here at Birkbees we understand that every family is different, so whatever your childcare needs, come and talk to us. Arrange a visit with the nursery management team today.

We'll help you understand how the scheme works and put together a package for your individual needs one that makes life easier, and more affordable.





# Starting Nursery

We strive to build positive relationships with all our parents and provide exceptional, dedicated childcare.

Once you have decided to enrol your child in one of our nurseries each child will have a bespoke package made for them, to ensure a happy, smooth and memorable transition into nursery life.

Your child's key person will work together in partnership with you in order to build a positive relationships from the start. You will be invited to stay with your child at the initial settling in session so that they can familiarise themselves with their new surroundings and their key workers who will be caring for them, whilst still having a familiar face nearby.

At this session we will discuss the "All about me" you will have completed at home. This first session is an information sharing session so be prepared for lots of questions!

You will be able to leave your child for periods of up to 2 hours to build their confidence ready for a full session at nursery. We book two sessions with you initially but if you require more, then just speak to your child's key person. We recognize each family as individuals and will work with you around what is the best for you and your child.

During your settling in visits, we will ensure that we understand your child's current routine, how your child likes to be comforted, if they have a special comforter, a favourite story or activity they like to do. Throughout your child's time at nursery, Their Key Worker will tailor activities to suit your child's interests.

If you are attending as a fully funded child 2,3 or 4 year old your settle time will be organized at the start of your first term. You are welcome to arrange individual pick up times to suit your child if the full 3 hour session is initially too much.



# Working Together

“The bond between child and parent is the most critical influence on a child’s life. Parenting has a strong impact on a child’s educational development, behaviour, and mental health”

## *Every Child Matters*

By working closely with us to build positive relationships, we can provide opportunities for you to be fully involved in your child’s care and education.

Our **Key Person** system provides you with a dedicated team member who will communicate daily on your child’s care and education in the setting and give examples of how learning can be carried on at home.

Your child's Key person is responsible for completing regular observations; these assist in the planning for your child’s development. We plan also around your child's interests so we always welcome information from parents about home interests and appreciate knowing all about home events, encouraging children to share information with staff and friends at circle time.

We also love to hear about special milestones in your child’s development, we call these the “Wow Moments”. These can be anything from learning to walk, using the toilet, writing their name, recognizing colours or any of the amazing things children say and do!

We complete termly assessments so we can track progress. This information is then used to plan for any gaps in development. We then look at closing these gaps by planning for your child’s individual needs. Our goal is to close these gaps and help your child make rapid progress.

Information on our topics and themes are displayed around the setting so all families can get involved. We will recommend how activities and interests can be carried on at home and will regularly send out ideas for activities that you and your child can be involved with.



# Working Together

## Parents Evenings

Our Parents Evenings are held twice a year and give you the opportunity to make an appointment with your child's Key Person to discuss your child's development and to look at the most recent assessment. It also gives you chance to look around the nursery and meet other parents. The management team are also on hand should you need them.

All of this information is accessed through Parent Zone an electronic learning journal which brings you closer to your child's development in nursery. Let's work in partnership to give your child the best start in life!

Parent Zone allows you to see the observations and assessments from your smart devices and you can also upload images and observations of your own.

The staff at Birkbees are really warm, caring and professional and my son spend splendid time there.  
We love Birkbees.

Absolutely brilliant nursery! Lovely carers and my little boy loves going to it! Xx



# Working Together

## Family Learning Events

Our Family learning Events are held termly in each room. These provide opportunities not only for parents but any family member to come in and spend time learning in the nursery. We welcome everyone to these sessions.

Do you have a special interest or skill you are willing to share?

Can you spare time to read a story?

We would love to hear from you!

We share information in many different ways so we effectively communicate with all families.



## We Follow the Early Years Foundation Stage Framework (EYFS)

The EYFS is a play based curriculum for children from Birth to 5 years, which allows children to explore and learn in an environment that is secure and safe, yet challenging. Play opportunities are non-stereotypical and available to all children promoting the teaching and learning from a skilled workforce.

It has four main principles which shape the practice, these are:



Every child is a unique child, who is constantly learning and can be resilient, capable, confident and self-assured



Children learn to be strong and independent through positive relationships



Children learn and develop well in enabling environments, in which their experiences respond to their individual needs and there is a strong partnership between practitioners and parents and/or carers.



Children develop and learn in different ways, and at different rates. The framework covers the education and care of all children in early years' provision, including children with special educational needs and disabilities.



The EYFS Framework practitioners seven areas of learning:

### **Prime**

- ♦ Communication and Language
- ♦ Physical Development
- ♦ Personal, Social and Emotional Development

### **Specific**

- ♦ Literacy
- ♦ Mathematics
- ♦ Understanding the World
- ♦ Expressive Arts and Design

When planning and guiding activities practitioners will reflect upon the different ways that children learn and ensure they utilise this within their practice.

### **The Characteristics of Effective Learning are:**

- ♦ Playing and exploring
- ♦ Active Learning
- ♦ Creating and thinking critically

The EYFS emphasises that parents are a child's primary educator and therefore encourages parents to contribute to their child's learning.

Visit our website on

<http://birkbees.co.uk/c-Early-Years-Foundation-Stage-Framework.php>  
to learn more about the EYFS



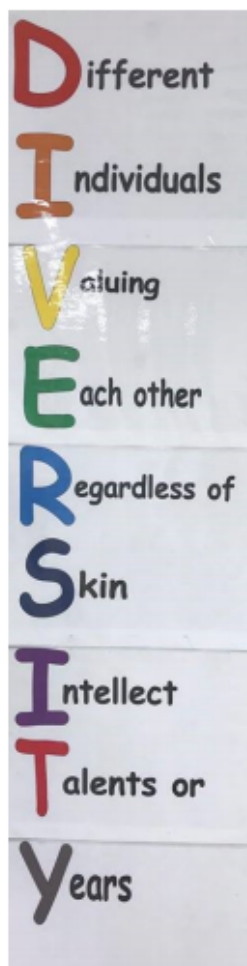
# Fundamental British Values

All children are encouraged to be individuals respecting all the people around them.

They are taught the **Fundamental British Values** which are ...

## Democracy

Children's views count!  
they are encouraged to value each other's opinions, make joint decisions and take turns sharing resources and working together.



## Rule of Law

We teach children to understand their own and others' behaviour and its consequences, helping them to distinguish right from wrong. We work with the children to create rules and the codes of behaviour and ensure children understand that the rules apply to everyone



# Fundamental British Values



## Individual Liberty

We provide opportunities for children to develop their self knowledge, self esteem and to build their confidence through allowing them to take risks and talk about their own experiences. We allow children to explore the language of feeling and responsibility and reflect on their differences and we teach the children that everyone is free to have different opinions

## Mutual Respect and Tolerance for Those with Different Faiths

We promote diverse attitudes and challenge gender, cultural and racial stereotyping by providing resources and activities to support inclusivity and tolerance. We value all our families' views, faiths and cultures and actively encourage our families to help us celebrate and share the similarities and differences amongst us.

**We expect all our staff, families and visitors to promote these values at all times**





# Healthy Eating

Our aim is to give each child the means by which to learn about food and form healthy eating habits as this sets the foundations for their future health and well being.

Our menus are planned in house and we actively involve the children, parents and staff in this process. We work closely with parents at all stages of weaning.

We follow the children's food trust guidelines to ensure we are meeting the needs of the children. We currently hold a FFL Early Years Award and continue to follow the Food for life ethos ... [click here for more information ...](#)

[FoodForLifeEarlyYearsAward](#)

We are passionate about providing the children with the necessary skills and knowledge to prepare and cook healthy food from the baby areas through to the preschool rooms. By getting children used to handling and tasting healthy ingredients increases their likelihood of eating healthy ingredients and understanding how food is prepared.

We use good quality, fresh, wholesome ingredients. We support local suppliers where reasonably practical and cater for a variety of special diets.

Visit our website at [www.birkbees.co.uk-menu](http://www.birkbees.co.uk-menu) for this seasons menu





# Inclusion

At Birkbees Nurseries we are committed to the inclusion of children with special educational needs. Over the last 20 years we have cared for many children with special educational needs.

We employ trained and experienced staff to provide individual care for children on a 1:1 basis where local authority funding is available. We have trained Special Educational Needs Coordinators (SENCOs) in the settings.

Their role is to work closely with parents to ensure that there are systems in place to assess the needs of children attending the setting and where necessary, with parent's consent, make referrals to the local authority. They also work closely with the staff team to plan and implement individual health care plans and then monitor and evaluate the child's development.

The SENCO and the support workers attend Team around the child meetings so that progress can be reviewed with other professionals. The SENCOs in the setting attend training throughout the year to ensure that they keep up to date with current procedures and legislation.

## The Local Offer



**Information about products and services relating to special educational needs, disabilities, education and more for children and young people aged 0 to 25 can be found at**

**[www.kirkleeslocaloffer.org.uk](http://www.kirkleeslocaloffer.org.uk)**



# Outdoor Learning

All our four nurseries have exciting and challenging outdoor areas which are enjoyed throughout the day by all children.

Each nurseries' outdoor environment is different but they all aim to develop children by giving them a valuable daily outdoor experience which contributes to their learning.

We believe that the outdoors environment is equally as important as the indoors.



Our outdoor areas are designed to meet the individual age groups of the children giving opportunities for freedom and movement, helping to promote a sense of well-being. Outdoor Learning supports the development of a healthy, active lifestyles by offering the opportunity for physical activity.



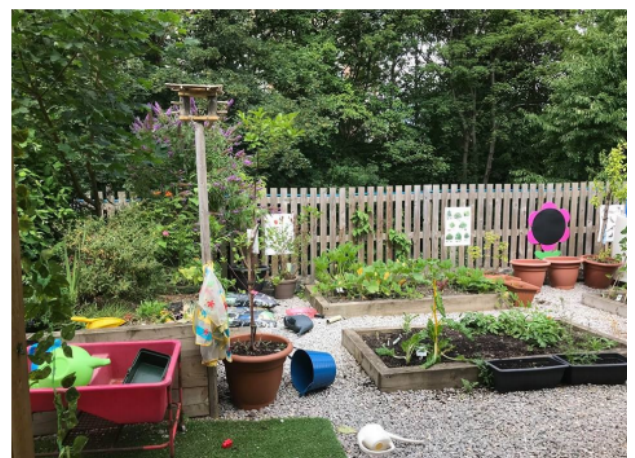


# Outdoor Learning

Outdoor activities are carried out throughout the settings and benefit the children by increasing self-esteem and self-confidence while improving social and communication skills and physical, motor and manipulative skills. They also increase motivation and concentration and give opportunities to develop problem solving as well as taking risks for themselves. Being in the outdoor environment offers an opportunity to be fitter and healthier.

We ensure that the children are actively involved with growing throughout the year. This takes place in the settings. This gives the children contact with the natural world and offers them experiences that are unique to outdoors for example the seasons and the weather. We are teaching the children to understand and respect the natural world by giving them first hand experiences of the interdependence of humans, animals, plants and lifecycles.

Children have carried out different activities in small groups they have used specialised tools with adult supervision. They have used materials such as wood and clay to build and create things. Children have also taken part in artwork that has been displayed in settings.



Birkbees Nursery





# Curiosity Approach

We have embedded the curiosity approach which is a modern day approach to Early Childhood. We aim to create 'thinkers & doers' by putting the child at the centre of their own development and education. Modern toys and technology are removed from the learning environment and replaced with everyday items to encourage children's natural curiosity and eagerness to explore and create.

All our nurseries are painted in neutral colours and filled with easily accessible, loose resources. But unlike what you may see at other nurseries, such as plastic toys, the children are instead presented with ordinary, real-life items made of wood or other natural materials.





# Rooms



Our experienced staff team create exciting activities for your child to enjoy each time they come to nursery. We make learning fun by stimulating their interests and providing quality resources and enabling environments. All the nurseries have beautifully planned rooms which allow children to move through the areas whilst accessing the continuous provision on offer. Spaces change and rooms evolve, allowing interests to be developed and deep level learning to take place





## Baby Room

Our baby rooms offer fantastic environments for your young children to explore. The rooms allow your child to develop in all areas of play, from creative, role play, physical play and sensory experiences. Individual learning plans for babies ensure that your child receives excellent care from our dedicated baby room staff team. We are very particular about standards of hygiene and in all our nurseries extra care and attention is taken. From babies being weaned, their first food is introduced in close consultation with parents. We are then able to offer a wide variety of nutritious homemade baby foods specially prepared from fresh vegetables and fruit, with the gradual introduction of fish, and eventually meats (again in close liaison with you) Every effort is made in communication between staff and parents to ensure complete confidence is maintained. A daily record is provided showing meals, sleeps and nappy changes as well as activities and developments. These are given to the parents/carers every day.



Birkbees Nursery



First Class Nursery





# Rooms

## Toddler Rooms

Children are encouraged to explore their environment with an excellent range of activities on offer daily, with additional access to outdoor play facilities, your child can play alongside their friends in a safe and stimulating area. The children are given lots of help and reassurance when they start toilet training and we work closely with our parents at this important stage to make it as smooth as possible. Each toddler room has their own bathroom to aid with toilet training. The children are encouraged to be independent at meal times. We are able to offer 15 hours of Free Early Education and Care (FEEC) to eligible two year old children. Information on the eligibility criteria is available from your health visitor from nursery or by visiting Kirklees Parent portal. All our nurseries undertake the statutory integrated review at 2. This check provides the parents/carers with a short written summary of their child's development in the prime areas. This check identifies the child's strengths and any areas where the child's progress is less than expected.







# Rooms

## Pre-School Rooms

In our preschool rooms, our older children are taught and cared for by a team of fully qualified and highly experienced practitioners. Our enabling environments help children to be stimulated and provide positive relationships that support the children to feel safe enough to explore. Children are given lots of opportunities to make decisions about where they play and what they would like to do. As we plan based on children's interests it means they are more involved with their learning and the practitioners help to facilitate their play. We work on getting our children "school ready" by encouraging the children to spend more time in small group activities where there are more focused learning outcomes. They spend time on the carpet for stories and circle time and help the practitioners with setting the tables for lunch and helping to tidy up. We expect children to be more independent at this age so they help prepare their own snacks and meals and get themselves ready for playing out. We are able to offer both the 15 and 30 hours Free Learning and Care and have various sessions available. Please contact individual settings for more information.





# Meet The Team

With over 100 staff across 4 settings, we know a thing or two about what makes an exceptional practitioner.

We are very proud of all the teams and support them to continue to develop through regular training and mentoring.

We recognise all the efforts made by holding an **Annual Award Evening**.

Parents, children and staff nominate practitioners for a variety of awards including Parents Choice Practitioner of the Year, Best Learning Environment and Prestigious Nursery of the Year.



We also recognise long service with the company. Within the staff teams we have over 25 staff with over 10 years of service and another 30 whom have completed more than 5 years of service. This continued commitment to the business and ultimately to the children is something we are very proud of. This level of continuity is quite unique in Day Care and helps the children to make secure bonds with their carers. We are confident that we can provide continuity for you and your child.

Once a year we close all the nurseries for an **Annual Training day**. Continuous professional development is necessary to keep the staff teams up to date with quality learning and development experiences.

All the staff within the nurseries are, First Aid trained to a level appropriate to their responsibilities.

All Nurseries have now been accredited a Millie's Mark, a recognised paediatric First Aid Award. It acknowledges that children's safety is at the forefront of our minds whilst caring for your child.



Birkbees is a vibrant and diverse purpose built nursery set in the heart of the community in Birkby.

The building houses six rooms for childcare on two levels. In our annexe building we have two floors consisting of two large rooms which house our morning session for funded three and four year olds.

We offer high quality care and learning in a well resourced, friendly environment. All rooms have direct access to the excellent outdoor facilities including a natural den building area, mud kitchen, Climbing wall and a large growing and planting area. We plan a varied and exciting curriculum to keep children engaged and promote learning in all areas of development.

We have a large, experienced staff team who have worked at the nursery for many years, most of whom are local to the setting so really understand the needs of the community. We are lucky to have many staff who are able to support families in community languages. We are well recognised in the community and can often be seen in the local parks, shops and Library. Our family learning events are always thoroughly enjoyed and well attended by our parents and extended families.

**Birkbees Day Care**  
**65a Halifax Old Road,**

**Huddersfield, HD1 6EE**

**01484 453 354**

**[birkbees@birkbees.co.uk](mailto:birkbees@birkbees.co.uk)**

**Facebook - Birkbees Childcare**  
**Huddersfield**

**Instagram - @birkbees**





Here at First Class Nursery we provide high quality, integrated and flexible day care.

We have highly trained and experienced staff, that provide a wide range of stimulating and educational activities linked to the EYFS curriculum. We encourage and support all children to achieve to their full potential actively promoting the development of positive self-image within each child.

Our outdoor play space offers children the opportunity to get creative with woodwork, loose parts play and caring for the fruit and vegetables which are grown each year.

We work in close partnership with parents and carers maintaining strong, open and honest working relationships and good communication.

Our families support events which we hold throughout the year including: Summer Fayre, Easter Extravaganza, and Christmas Fayre.

One of the main benefits to attending First class Nursery is the ease of access to Huddersfield town centre, public transport links and the local further education sites such as Kirklees College, Greenhead College and Huddersfield University all within walking distance.



**First Class Nursery**  
**16A Portland St,**  
**Huddersfield, HD1 5PB**  
**01484 950 746**

**[firstclass@birkbees.co.uk](mailto:firstclass@birkbees.co.uk)**

**Facebook - First Class**  
**Childcare Huddersfield**

**Instagram -**  
**@firstclasshuddersfield**





At Fixbees Day Care we pride ourselves on offering a high standard of care where we are both passionate and knowledgeable in early years care and education and are always striving to ensure our practices are kept to an optimum level in regard to quality, health and safety and care to all who use our services.

Fixbees Day Care is the smallest of the groups' nurseries and offers a warm homely environment catering for up to 45 children between the ages of 0 to 5. Children settle quickly into nursery life because of the time and attention we give to each and every child.

The three rooms all enjoy playing out in the family garden where they have the opportunity to plant, build and exercise.

We work in very close partnership with parents and carers and have outstanding communication, we engage our families well and they support us in all our home learning, social events and outings.

Our annual Graduation ceremonies are always a hit!

**Fixbees Nursery**  
**85 Fixby Rd,**  
**Huddersfield, HD2 2JB**

**01484 310 953**

**[fixbees@birkbees.co.uk](mailto:fixbees@birkbees.co.uk)**

**Facebook** - Fixbees  
Childcare Huddersfield  
**Instagram** - @fixbeesday





Nursery Rhymes has been located on the edge of Fartown since 1994 and was our first nursery to open. With a reputation for providing high quality childcare we offer full day care and out of school care for 70 children under the age of 11.

This Nursery is a converted house which over the years has been extended to offer a number of vibrant and inspiring rooms allowing the children to learn, explore and develop in a diverse environment.

The Nursery has a real passion for the outdoors.

We enjoy growing fruit, vegetables and herbs with the children.

We have a beautiful Willow Den and a fabulous mud kitchen where children enjoy taking care of their environment as well as being creative and taking risks.

The longstanding staff team are very highly qualified and experienced with staff having BA in Early Years and Early Years Teacher Status and Level 3 Forest School Practitioner.

**Nursery Rhymes  
73 Woodhouse Hill,  
Huddersfield HD2 1DH**



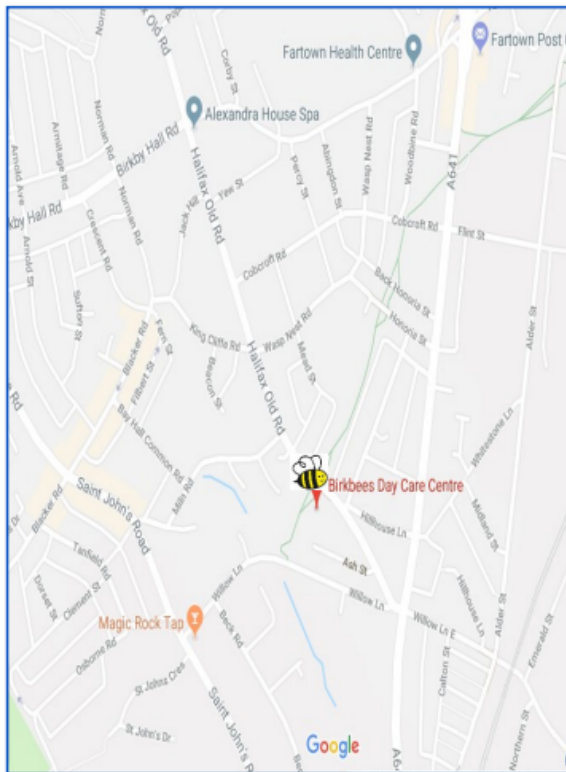
**01484 534 991**

**[nurseryrhymes@birkbees.co.uk](mailto:nurseryrhymes@birkbees.co.uk)**

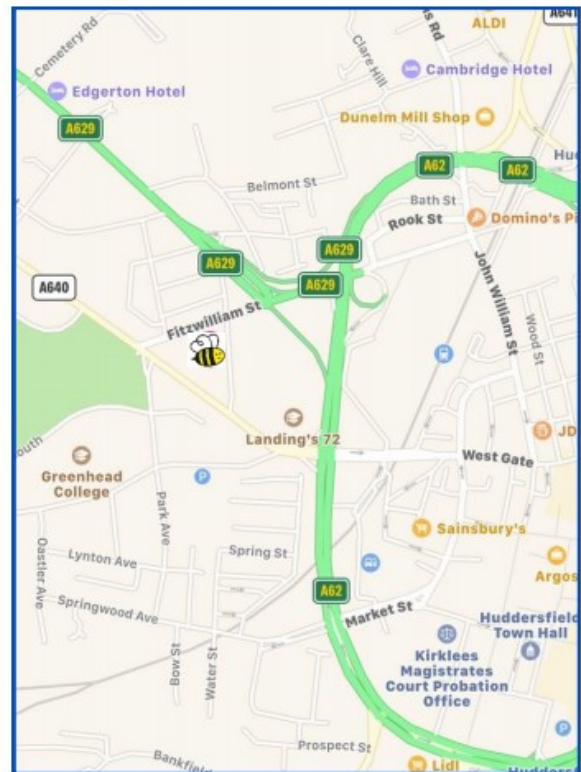
**Facebook - Nursery Rhymes  
Childcare Huddersfield**

**Instagram -  
@nurseryrhymeshuddersfield**

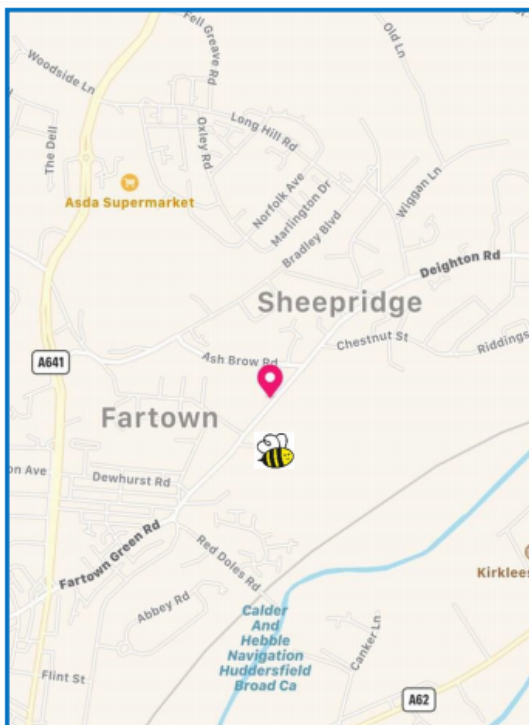
**Birkbees**  
**65a Halifax Old Rd**  
**Hd1 6EE**



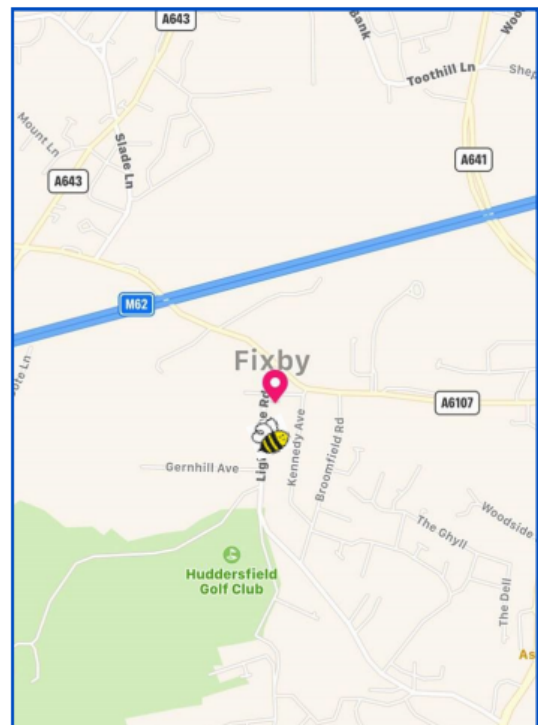
**First Class**  
**16a Portland Street**  
**HD1 5PB**



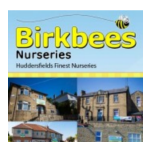
**Nursery Rhymes**  
**73 Woodhouse Hill**  
**HD2 1DH**



**Fixbees**  
**85 Fixby Rd**  
**Hd2 2JB**



**PLEASE VISIT OUR WEBSITE FOR FURTHER INFORMATION**



[www.birkbees.co.uk](http://www.birkbees.co.uk)